

Shriram Education Society, Phaltan

**NAMDEVRAO SURYAWANSHI (BEDKE)
COLLEGE, PHALTAN.**

Tal. Phaltan Dist. Satara

CRITERION NO.6

Governance, Leadership and Management

Key Indicator-6.1

6.1 Institutional Vision and Leadership

6.1.1 The institutional governance and leadership are in accordance with the vision and mission of the institution and is visible in various Institutional practices such as NEP implementation sustained institutional growth, decentralization, participation in the institutional governance and in their short term and long term Institutional Perspective Plan.

॥ प्रज्वलितो ज्ञानमयः प्रदीपः ॥

श्रीराम एज्युकेशन सोसायटी फलटणचे

नामदेवराव सूर्यवंशी (बेडके) महाविद्यालय

एस. टी. स्टॅण्डजवळ, नाना पाटील चौक, फलटण ४१५ ५२३. जि. सातारा. (महाराष्ट्र)

फोन : (०२१६६) २२२४७४, फॅक्स : (०२१६६) २२४९५९

वेबसाईट : www.nsbcp haltan.com/Phlt321.cl@unishivaji.ac.in • ईमेल : nsbcollege7@gmail.com



NGC 2004/(1/04)/म. शि. - ३ दि. १५ जुलै २००४

◉ कला ◉ वाणिज्य ◉ विज्ञान ◉

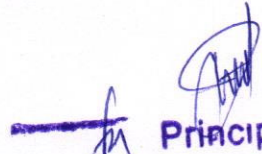
स्थापना : दि. १८ ऑगस्ट २००४

जावक क्र. :

दिनांक :

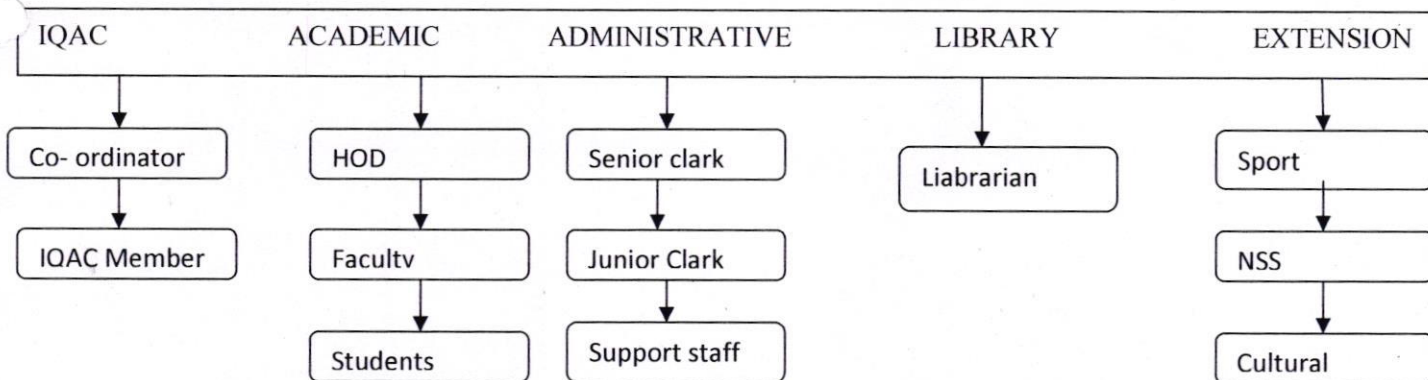
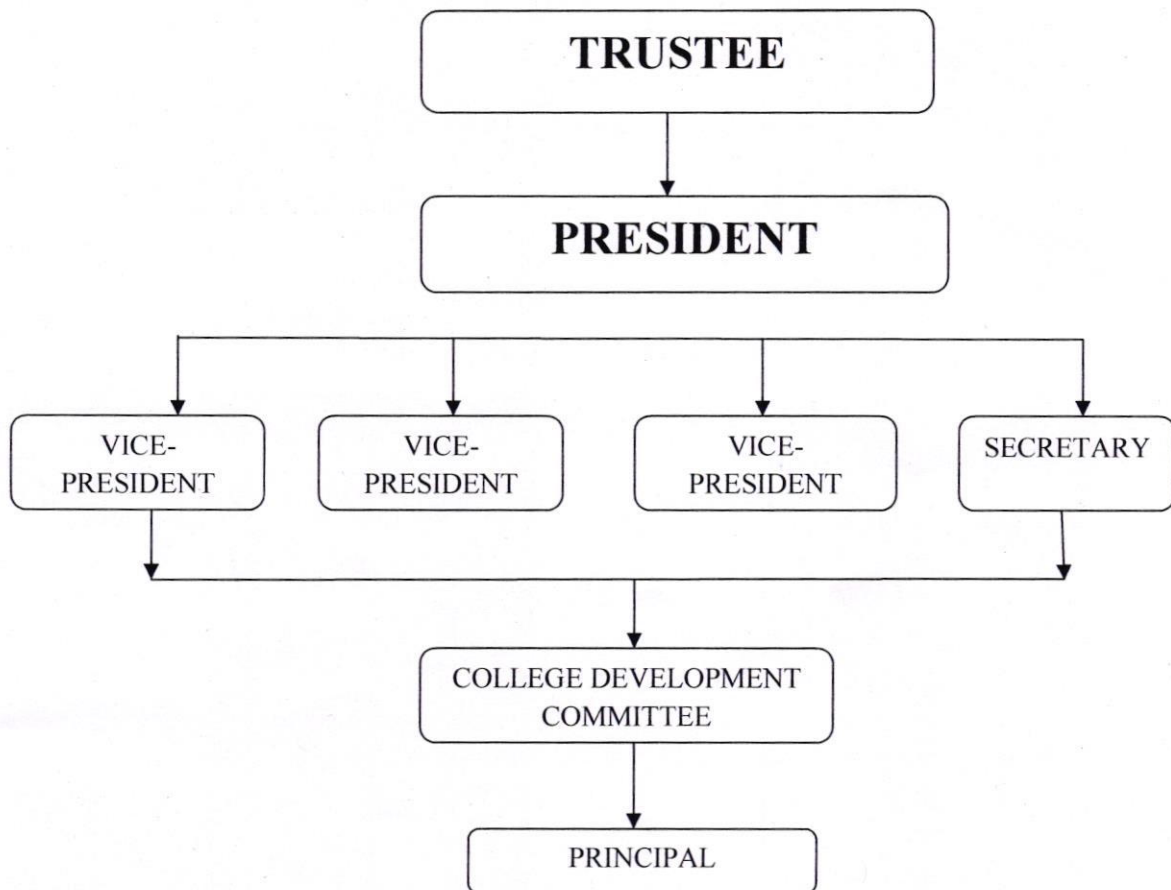
SELF DECLARATION

This is to certify that, the information, Reports, True copies of the supporting documents, Numerical Data and Web links furnishes in this file are verified by IQAC and Head of the Institution and found all correct. Hence this Certificate issued.


Principal
Namdevrao Suryawanshi(Bedke) College
Phaltan, Dist. Satara.



GOVERNANCE, LEADERSHIP MANAGEMENT




Principal
Namdevrao Suryawanshi(Bedke) College
Phaltan, Dist. Satara.

Motto

!! प्रज्वलितो ज्ञानमयः प्रदीपः !!



Vision :

To provide quality education to the student for serving our community of Alumni and friends through imaginative programs that enrich their lifelong relationship with the nation and that expand our collective contributions to the world.

Mission :

- ❖ Maintain a level of excellence and standards in all programs that will give them university, state wide, national and international significance.
- ❖ To provide the educational facility to the students who are from rural area.
- ❖ To make the students aware of human value.
- ❖ To make the students knowledgeable, cultural responsible citizens.
- ❖ To promote qualitative research culture among the students and the staff.
- ❖ To empower socially economically marginalized section of the rural society of the region.

Objective :

- ❖ To create the awareness among the rural students about importance of higher education to meet the challenge of globalization in present scenario successfully.
- ❖ To provide career guidance for placement in various organizations.
- ❖ To provide skill based education to the student specially form rural and remote area to enhance the job potential.


Principal
Namdevrao Suryawanshi(Bedke) College
Phaltan, Dist. Satara.